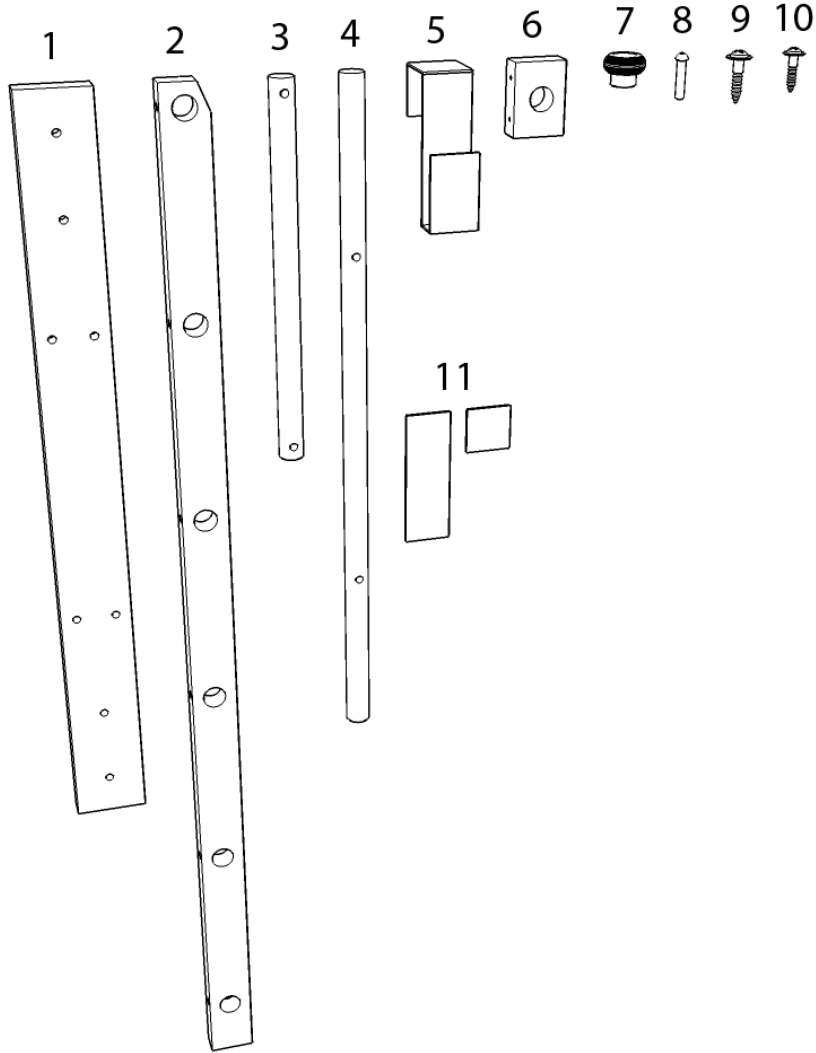


Zipladder Door

Parts Overview:



Parts Included:

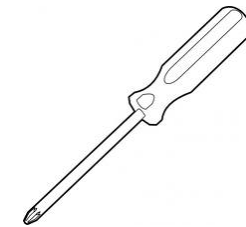
1. Back Board [Qty: 1]
2. Rack Legs [Qty: 2]
3. Hinge Dowel [Qty: 1]
4. Hanger Dowels [Qty: 5]
5. Metal Door Hanger [Qty: 2]
6. Hinge Support Blocks [Qty: 2]
7. Wood Knobs [Qty: 4]
8. Wood Pegs [Qty: 12]
9. Large Screws [Qty: 8]
10. Small Screws [Qty: 4]
11. Self-adhesive foam pads –small & large [Qty: 2]

Tools Needed:

Hammer



Phillips Screwdriver

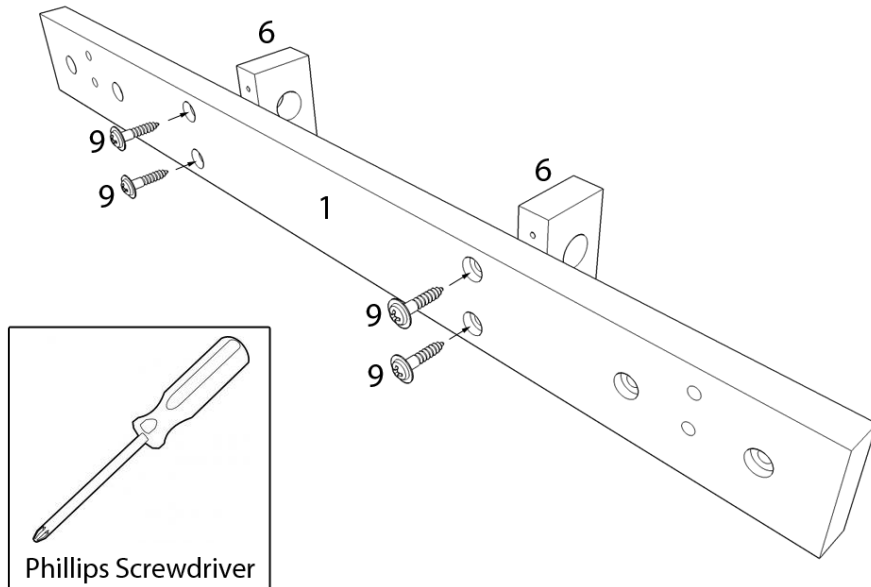


Warning: Do not attempt to climb on the Zipladder.
Zipladder is not designed to support the weight of a human.

Assembly Instructions:

Step 1:

Screw hinge support blocks (6) to the back board (1) using the large screws (9) and a Phillips screwdriver.

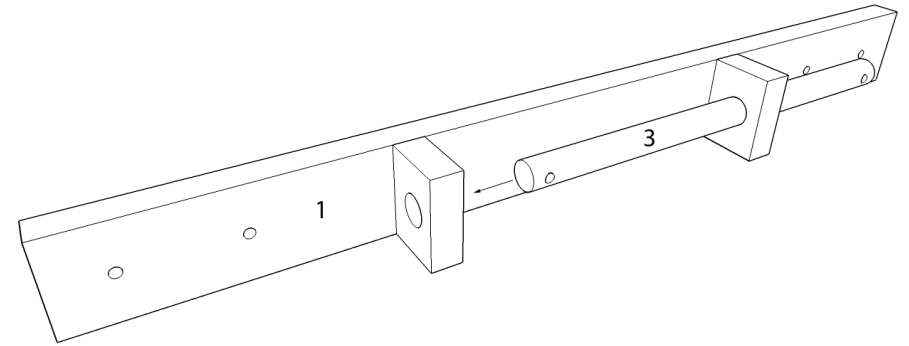


Step 2:

Place the hinge dowel (3) through the support blocks (6).

Note: This must be done before screwing in the wood knobs (7).

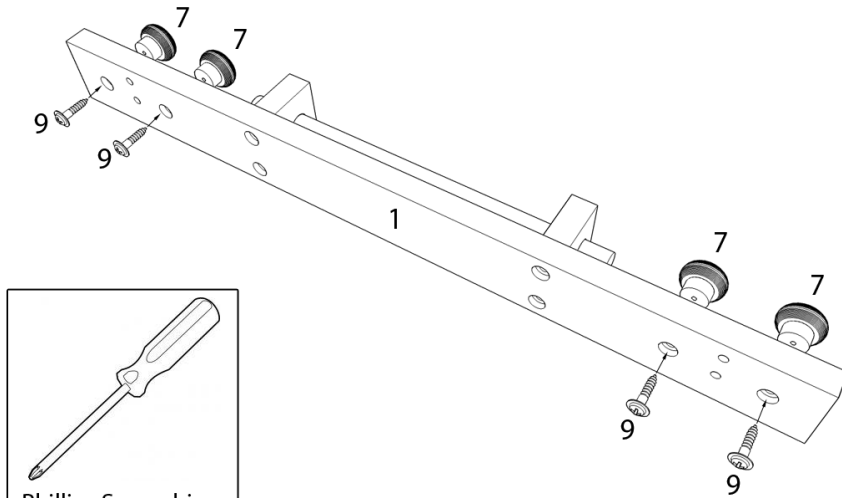
Note: The hinge support block screws from Step 1 may need to be temporarily loosened to help align the dowel holes.



Step 3:

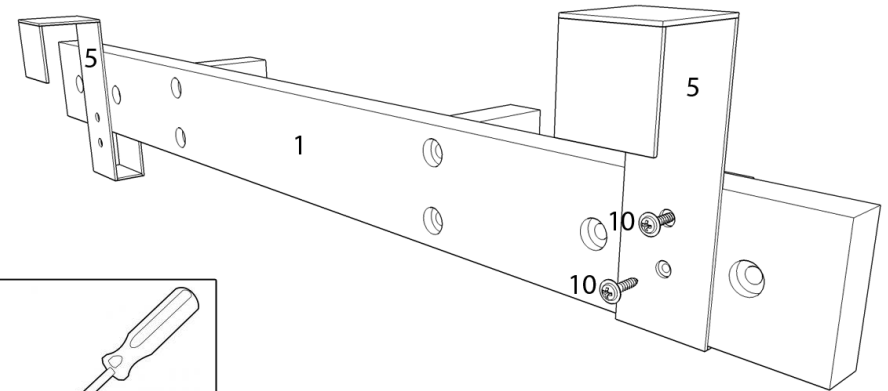
Screw the wood knobs (7) to the back board (1) using the large screws (9) and a Phillips screwdriver.

Note: The hinge dowel (3) must be in place before the wood knobs are attached.



Step 4:

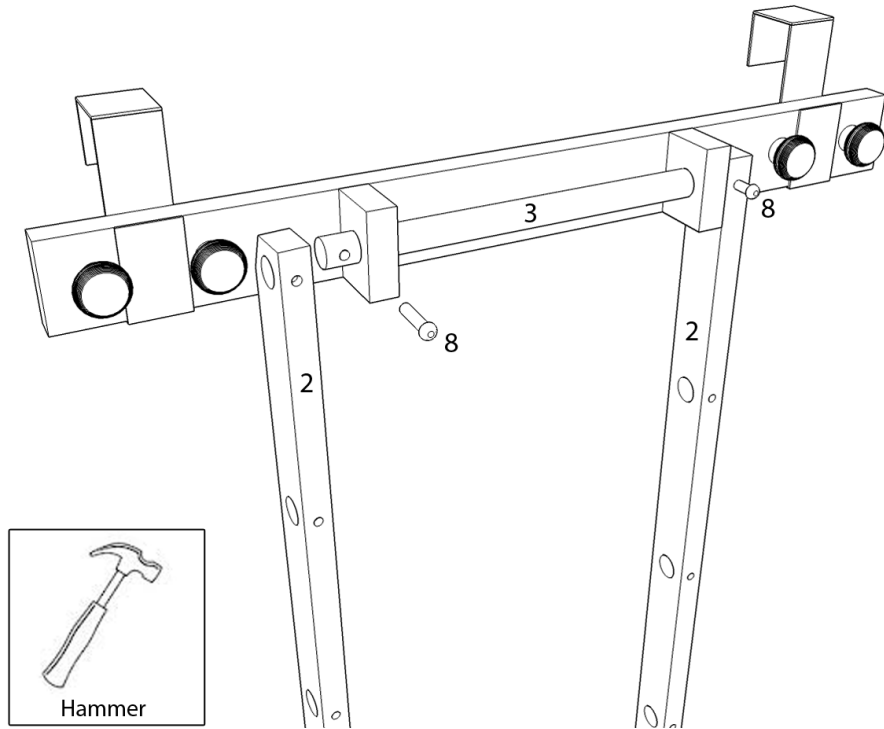
Place the metal door hanger (5) on the back board (1) between the wood knobs (7). Screw the metal hanger to the back board using the small screws (10) and a Phillips screwdriver.



Phillips Screwdriver

Step 5:

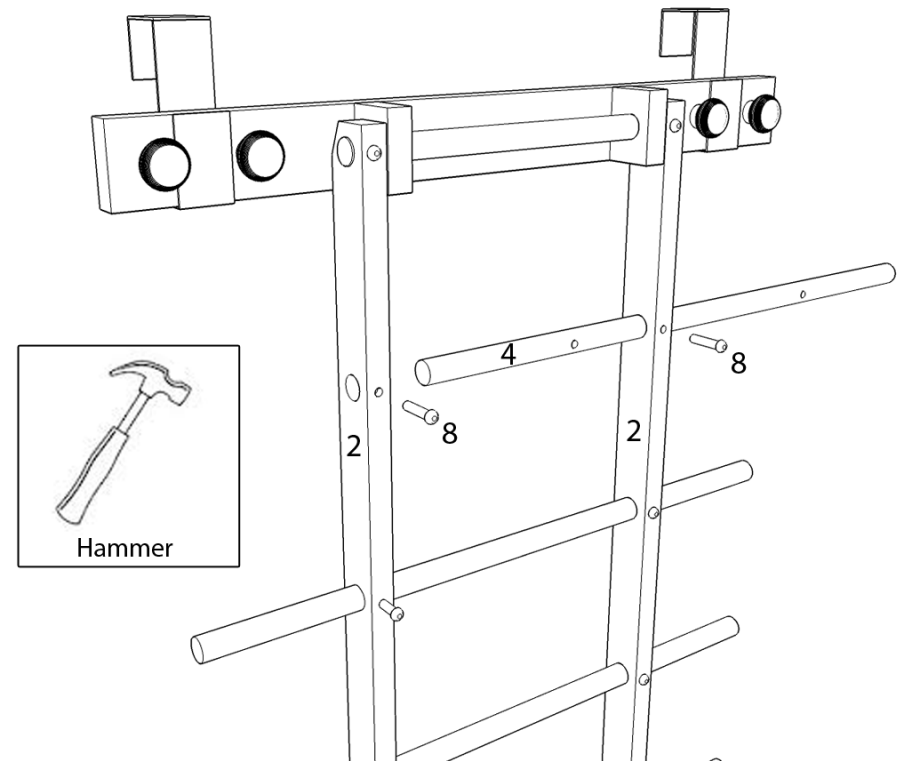
Place the rack legs (2) on the hinge dowel (3) such that the peg holes line up. Then lightly hammer the wood pegs (8) through the holes in the rack legs and hinge dowel.



Step 6:

Place the hanger dowels (4) through the dowel holes in the rack legs (2) such that the peg holes line up. Then lightly hammer the wood pegs (8) through the rack legs and hanger dowels.

Note: Dowels are generally tight fitting to make Zipladder more rigid. Twisting or rocking the dowels may help when pushing them through the holes in the rack legs.



Step 7:

Stick the larger self-adhesive foam pads (11) over the screws (10) on the metal door hanger (5). Stick the smaller foam pads on the back side of the metal door hanger.

